

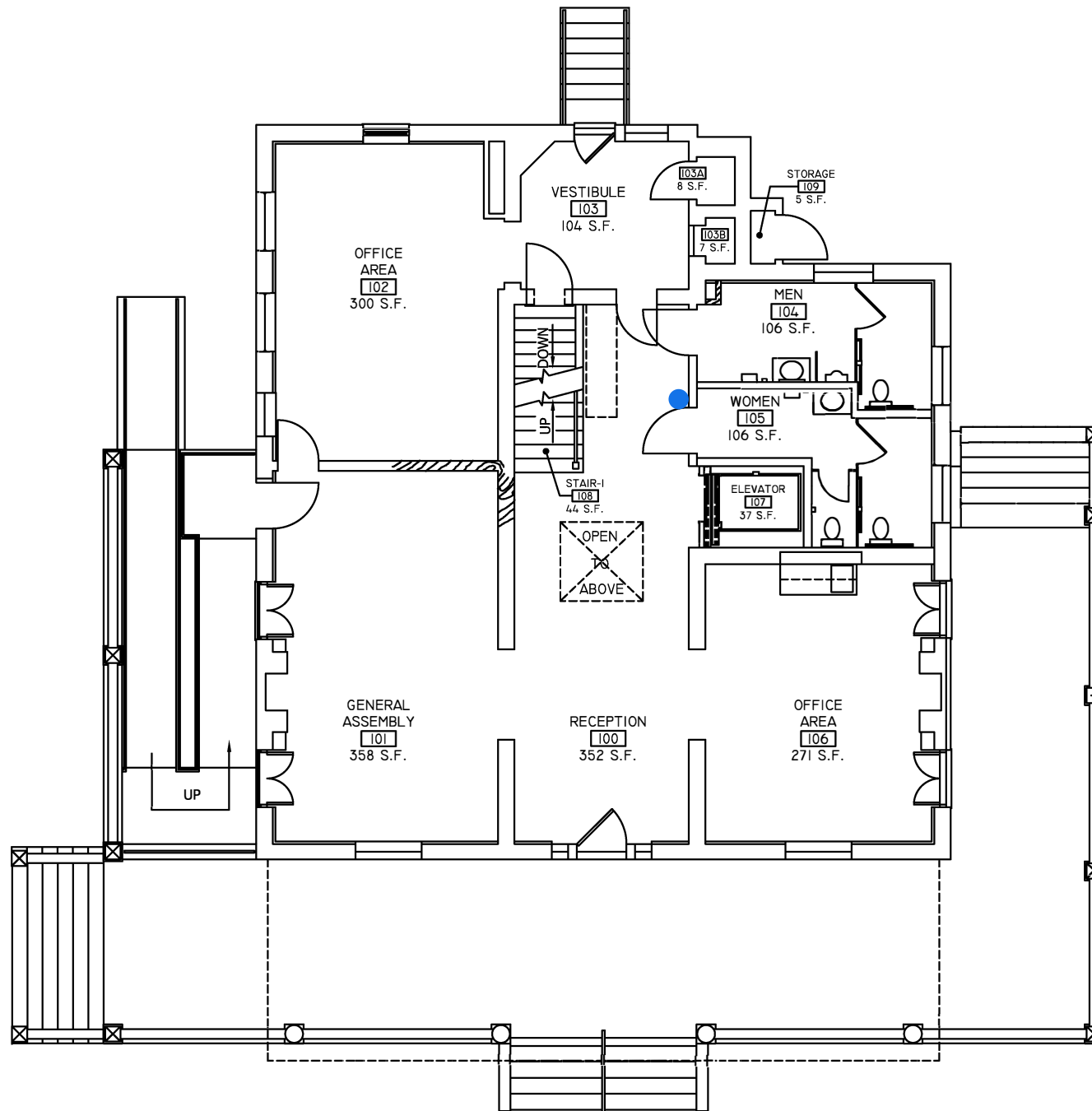
- Water Bottle Refill Station
- Standard Water Fountain

DWG. NO.:	REVISION DATE:
A-0	08-22-2018
BLDG. CODE:	SCALE:
AD	$\frac{1}{8}'' = 1'$
	DESIGN BY:
	PLA
	CHECKED BY:
	JCD

**RECORD FLOOR PLAN
ADMISSIONS HOUSE BUILDING**

BASEMENT FLOOR PLAN

SALISBURY UNIVERSITY
 FACILITIES PLANNING & CAPITAL PROJECTS
 ARCHITECTURAL AND ENGINEERING SERVICES
 1101 CAMDEN AVENUE
 SALISBURY, MARYLAND 21801
 410 - 543 - 6215



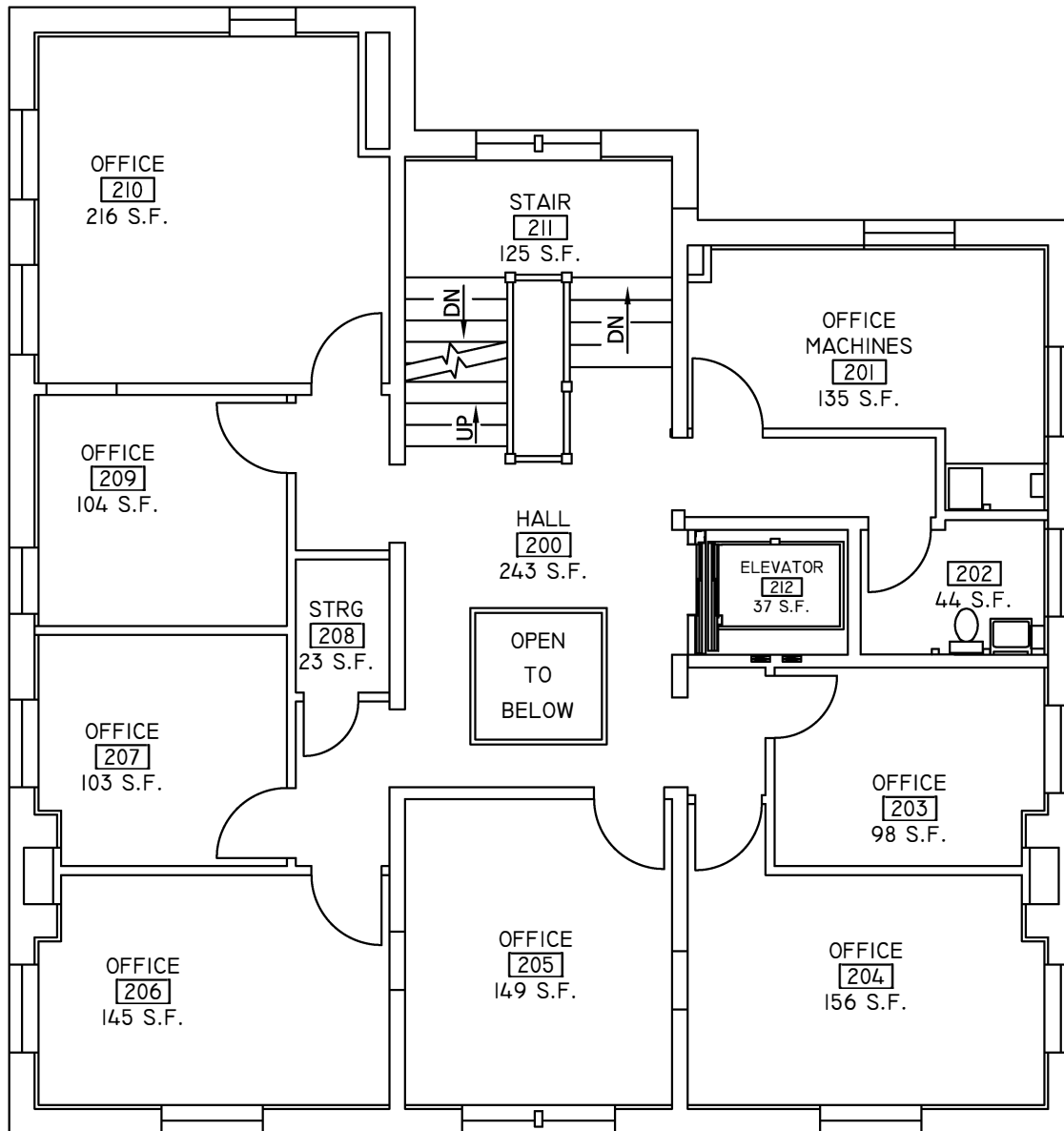
- Water Bottle Refill Station
- Standard Water Fountain

DWG. NO.:	REVISION DATE:
A-1	08-22-18
SCALE:	NTS
DESIGN BY:	PLA
BLDG. CODE:	CHECKED BY:
AD	JCD

**RECORD FLOOR PLAN
ADMISSIONS HOUSE BUILDING**

FIRST FLOOR PLAN

SALISBURY UNIVERSITY
 FACILITIES PLANNING & CAPITAL PROJECTS
 ARCHITECTURAL AND ENGINEERING SERVICES
 1101 CAMDEN AVENUE
 SALISBURY, MARYLAND 21801
 410 - 543 - 6215



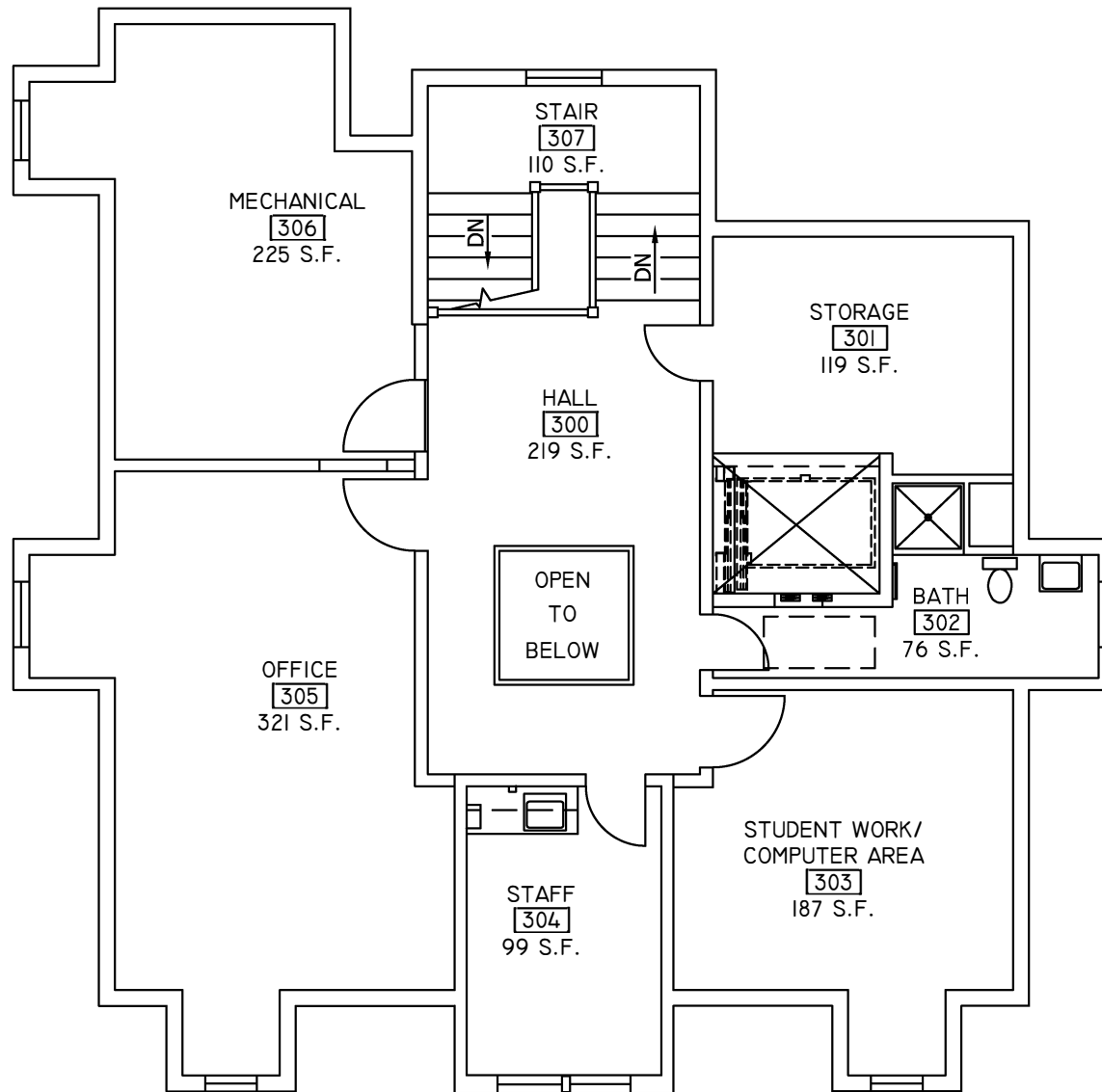
- Water Bottle Refill Station
- Standard Water Fountain

DWG. NO.:	REVISION DATE:
A-2	08-22-18
BLDG. CODE:	SCALE:
AD	$\frac{1}{8}'' = 1'$
	DESIGN BY:
	PLA
	CHECKED BY:
	JCD

**RECORD FLOOR PLAN
ADMISSIONS HOUSE BUILDING**

SECOND FLOOR PLAN

SALISBURY UNIVERSITY
 FACILITIES PLANNING & CAPITAL PROJECTS
 ARCHITECTURAL AND ENGINEERING SERVICES
 1101 CAMDEN AVENUE
 SALISBURY, MARYLAND 21801
 410 - 543 - 6215



- Water Bottle Refill Station
- Standard Water Fountain

DWG. NO.:	REVISION DATE:
A-3	08-22-18
BLDG. CODE:	SCALE:
AD	$\frac{1}{8}'' = 1'$
	DESIGN BY:
	PLA
	CHECKED BY:
	JCD

**RECORD FLOOR PLAN
ADMISSIONS HOUSE BUILDING**

THIRD FLOOR PLAN

SALISBURY UNIVERSITY
 FACILITIES PLANNING & CAPITAL PROJECTS
 ARCHITECTURAL AND ENGINEERING SERVICES
 1101 CAMDEN AVENUE
 SALISBURY, MARYLAND 21801
 410 - 543 - 6215